

# sculpture by the sea

## MOBILITY ACCESS TOUR: MARKS PARK, BONDI

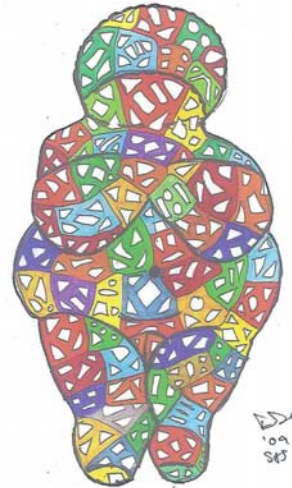
The sculptures listed below have been nominated by both the artist and the site curator as safe to touch. These sculptures are located in easily accessible areas and all are close to a path, placed on either grass or sand. Images are accompanied with the artist statements.



60. James Parrett

### **Blind Turn**

A multitude of engaging aspects created through the use of circular form.



59. Daniel Clemett

### **Embracing the plateau**

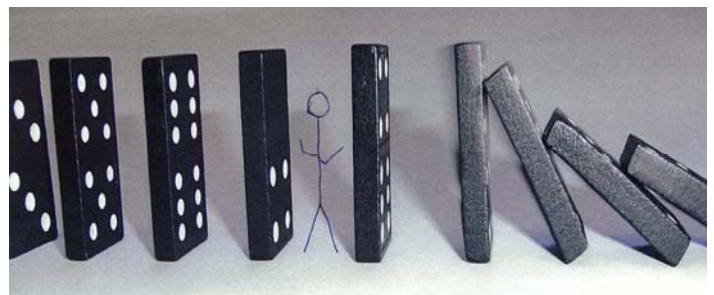
Offering a wry comment on ancient ideals in juxtaposition with the state of contemporary man, a most poignant health problem of the developed world.



58. Stephen Coburn

### **Flow**

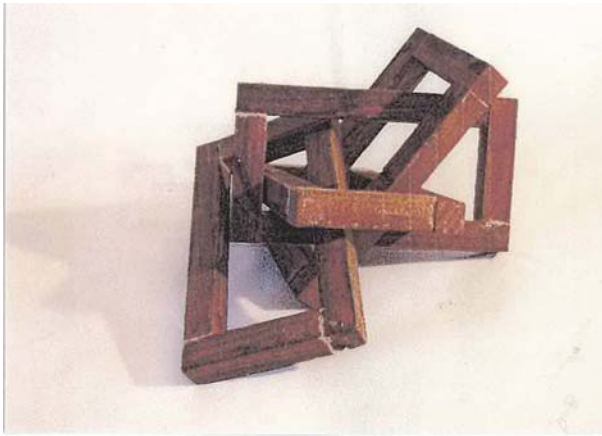
An organic flow of metal seeming like a frozen flow of water or a reclining figure, a pregnant woman or a rainbow snake.



57. Michael Lipman

### **Recession**

A statement of the times. World recession has caused the 'domino effect' in many areas, all of which affect our lives.



56. Akira Kamada

**Kazuko no katachi (shape of family)**

You cannot only see one love in each frame. Everything is mixed, entangled...



53. Chris Leaver

**Everything I see**

Interested in the commercial and the manufactured aspect of the world and art, and how people see and relate to it. Influenced by classical sculpture, model figurines, a garden ornament, and the idea of public space.



54. Bob Emser

**Sky trial II**

In making art I believe that the simpler the execution of an idea the more pure the concept or soul of the piece is.



52. Jonathan Leahey

**DNA**

Representation of the genetic instructions that make up all living organisms.

50. Dale Miles

**Secret Weapon**

Humanity has unwittingly amassed a colossal food source for a life form that is just about to flourish on earth.

